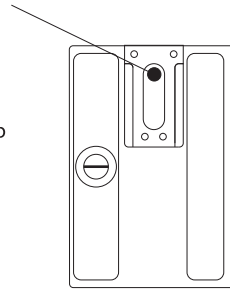


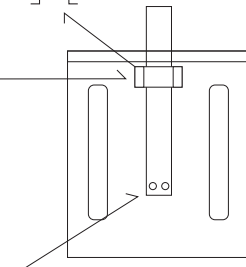
After removing the pour gates and flash from the castings follow the steps below.

1. Drill a small hole and insert a straight pin so that the head is approximately 2-3mm above the surface of the radio. The head of the straight pin will be inserted into the Y strap to hold the radio in place. This is mechanically more robust than using the scale clamp which will "appear" to be clamped to the Y strap per the actual radio.



```
**cross section**
```

2. There is a small retainer on the battery box, designed to keep the leather strap positioned. This can be made from brass, aluminum or even styrene. It should tall enough to allow the leather strap to pass through. The shape and position of this retainer is illustrated on the right.



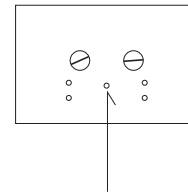
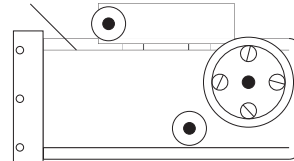
Fashion a leather strap as shown. It should be approximately 2 inches long. It can be attached to the battery box with medium CA and the rivets can be simulated or, you can drill small holes and insert small straight pins to act as rivets providing a stronger anchoring point. This step should be done after painting.

5. The microphone and headset connectors can be glued to the radio face before or after painting as you may choose. If you desire functional connectors, you can mark the proper location to drill holes for brass pins by holding the connectors to the radio face plate and marking the socket locations from the back side of the radio face with a pencil as drill guides for the brass pins. Note that the connectors are 2 different sizes, the wider of the 2 goes to the vertical plug on the bottom left of the radio face. This location is marked "Mikrofon".

Decals

he decals are best applied to a glossy surface. Testors Gloss Cote works well. Once the decals are set and dry, a light coat of Gloss Cote followed by Dull Cote should make the decal film invisible. Micro-Scale Micro Set works well with helping the decals to snuggle down to the surface. Pay special attention to decal number 13. Either dry fit prior to wetting or use Micro Set to allow the decal to conform to the window shape as the printing and casting process can cause a slight deviation in size. Also please that if you are opting for a black battery box, decals 14, 15 and 16 should be white as provided on the supplemental decal sheet.

3. Glue the hinged clamp to the radio. It should be centered left to right, with the hinge butted against line "A" on the radio body. The clamp should be positioned so that it touches the antennae cup. It is recommended that you apply a drop of medium CA where the clamp touches the antennae cup for added strength.



4. Drill a small hole using the pilot hole molded into the battery box top. Insert a medium size straight pin leaving the head approximately 2-3mm above the battery box top surface. The leather strap attaches to this fastener as the means for the battery box to be mounted to the wearers belt.



Painting

This radio was painted in 2 different schemes, Dunkelgelb and Black. The black version is simply all black, with an off white insulator on top of the radio. The Dunkelgelb version differs in that the microphone and headphone sockets as well as the frequency selector knob and name plate should be painted black. The insulator again being off white simulating porcelain. Both versions have silver knobs as shown.

